

Wireless Lighting Controls



JASCO

Make your house a fully automated



**The easiest way
to go wireless!**

GE-branded smart switches and dimmers require minimal setup.

Connected Home



Plug-In Outdoor Smart Switch
Control & schedule landscape & holiday lights, fountain & pond pumps, and more.



In-Wall Smart Fan Control
Control & schedule ceiling fan speed from anywhere.



In-Wall Smart Switch
Control & schedule ceiling lights & fans, wall sconces, or porch lights from any indoor switch.



Direct Wire, 40 Amps Outdoor Smart Switch
Control & schedule pool pumps, water heaters, outdoor lights and more.



In-Wall Smart Outlet
Control & schedule lamps and other plug-in devices.



Plug-In Smart Switch
Control & schedule lamps and other devices. Available in single and double outlet models.



Plug-In Smart Dimmer
Control, schedule & dim table and floor lamps. Available in single and double outlet models.



In-Wall Add-On Switch
Add a switch to any GE In-Wall Smart Device to control lights or devices from multiple locations.



In-Wall Smart Dimmer
Control, schedule & dim ceiling & wall light fixtures.

Z-Wave Plus is a wireless technology that turns regular household products into smart devices that securely “talk” to each other. Jasco’s Connected Home Collection allows you to

control and schedule lights, pool pumps, water heaters and more from anywhere using your phone, tablet, PC or Z-Wave remotes.

Visit easyzwave.com for more info. ■



Works with any device!

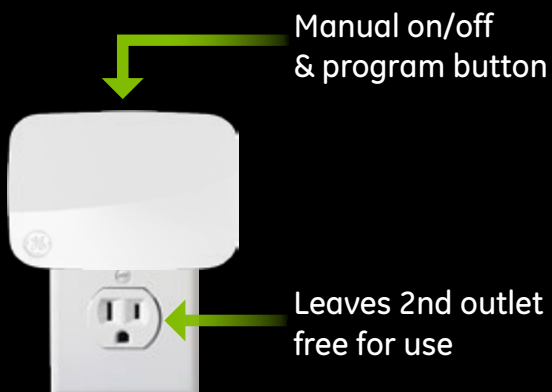
Wireless control from smartphones, tablets, PCs and Z-Wave remotes using a Z-Wave enabled gateway.

Plug-In

Dimmer & Switches



Z-Wave and Z-Wave Plus
all Plug-In Smart Devices feature...



Customize
Scenes



Control From
Anywhere



Schedule
Timed Events



All Z-Wave and Z-Wave Plus Smart Devices are cUL Listed

Plug-In Switches & Dimmers



Model 12718

Plug-In Smart Dimmer

- Controls the on/off settings and brightness level of a table or floor lamp using a Z-Wave certified controller
- Dimmer contains one Z-Wave outlet and one always on passthrough outlet
- UL listed for use with dimmable LED/CFLs



Model 12719

Plug-In Smart Switch

- Controls the on/off settings of LED, CFL, xenon, halogen and incandescent lighting, fans or small appliances using a Z-Wave certified controller
- Switch contains one Z-Wave controlled outlet and one always on passthrough outlet
- UL Listed



Plug-In Dimmers



Model 28167

Plug-In Smart Dimmer (Single Outlet)

- Controls the on/off and brightness level of a table or floor lamp using a Z-Wave certified controller
- Dimmer contains one Z-Wave outlet
- UL listed for use with dimmable LED/CFLs



Model 14280

Plug-In Smart Dimmer (Dual Controlled Outlets)

- Controls the on/off and brightness level of a table or floor lamp using a Z-Wave certified controller
- Dimmer contains two Z-Wave outlets controlled together
- UL listed for use with dimmable LED/CFLs



Model 23171 CA

Plug-In Smart Dimmer (Dual Outlets with Passthrough)

- Controls the on/off and brightness level of a table or floor lamp using a Z-Wave certified controller
- Dimmer contains one Z-Wave outlet and one always on passthrough outlet
- UL listed for use with dimmable LED/CFLs



Model 28175 CA

Plug-In Smart Dimmer with USB Charging (Dual Independently Controlled Outlets)

- Controls the on/off and brightness level of a table or floor lamp using a Z-Wave certified controller
- Dimmer contains two independently controlled Z-Wave outlets and two shared USB charging ports at 3.4 Amps
- UL listed for use with dimmable LED/CFLs





Model 28169

Plug-In Smart Switch (Single Outlet)

- Controls the on/off settings of LED, CFL, xenon, halogen and incandescent lighting, fans or small appliances using a Z-Wave certified controller
- Switch contains one Z-Wave outlet
- UL Listed



Model 14282

Plug-In Smart Switch (Dual Controlled Outlets)

- Controls the on/off settings of LED, CFL, xenon, halogen and incandescent lighting, fans or small appliances using a Z-Wave certified controller
- Switch contains two Z-Wave outlets controlled together
- UL Listed



Model 28173 CA

Plug-In Smart Switch (Dual Outlets with Passthrough)

- Controls the on/off settings of LED, CFL, xenon, halogen and incandescent lighting, fans or small appliances using a Z-Wave certified controller
- Switch contains one Z-Wave outlet and one always on passthrough outlet
- UL Listed



Model 28177 CA

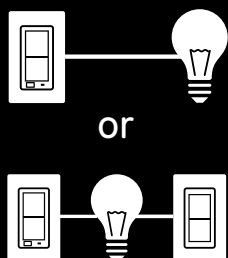
Plug-In Smart Switch with USB Charging (Dual Independently Controlled Outlets)

- Controls the on/off settings of LED, CFL, xenon, halogen and incandescent lighting, fans or small appliances using a Z-Wave certified controller
- Switch contains two independently controlled Z-Wave outlets and two shared USB charging ports at 3.4 Amps
- UL Listed

In-Wall Dimmer & Switches

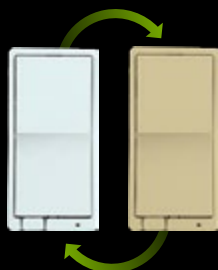


Z-Wave and Z-Wave Plus
all In-Wall Smart Devices feature...



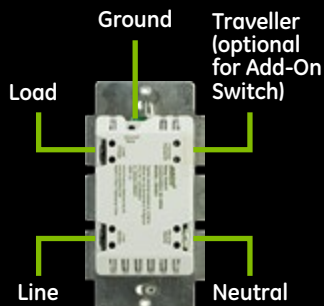
Single or Multi Switch

Control lighting from up to
five different switches.



Changeable Paddles

Includes white & light almond.
Ivory, brown & black sold
separately.



Easy to install!

Replace your existing switch
in as little as 15 minutes.

Includes space-saving screw
terminals and neutral jumper
wire.



Customize
Scenes



Control From
Anywhere



Schedule
Timed Events

Multiple Paddle Colors Available

In-Wall Dimmers & Switches



Without
Air Gap

With
Air Gap

Jasco/GE In-Wall
Smart Devices use two
different paddle designs

	Black	Brown	Ivory
With Air Gap	13940	13943	13945
Without Air Gap	13941	13944	13946



Model 12722

In-Wall Smart Switch

- Controls the on/off settings of permanently installed lighting using a Z-Wave certified controller
- For use in single pole or 3-way wiring (3-way system requires GE model #12723 add-on switch)
- LED indicator shows switch location in a dark room (can be disabled)
- UL Listed



Model 12723

In-Wall Add-On Switch

- Required for use with 3-way or 4-way wiring
- Can be installed with GE brand In-Wall Smart dimmers, switches and fan controls – add-on switch functions the same as the primary control
- UL Listed



In-Wall Dimmers & Switches



Model 12724

In-Wall Smart Dimmer

- Controls the on/off & brightness settings of permanently installed lighting using a Z-Wave certified controller
- For use in single pole or 3-way wiring (3-way system requires GE model #12723 add-on switch)
- LED indicator shows switch location in a dark room (can be disabled)
- UL listed for use with dimmable LED/CFLs



Model 12725

In-Wall 1000 Watt Smart Dimmer

- Controls the on/off & brightness settings of permanently installed High Output Incandescent lighting using a Z-Wave certified controller
- For use in single pole or 3-way wiring (3-way system requires GE model #12723 add-on switch)
- LED indicator shows switch location in a dark room (can be disabled)
- No neutral wire required
- UL Listed

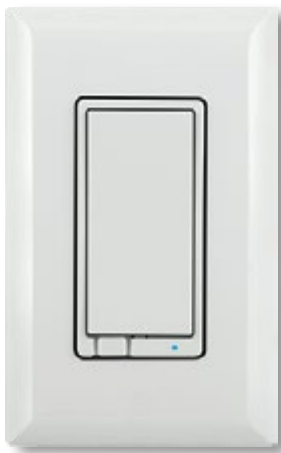


Model 12730

In-Wall Smart Fan Control

- Controls a ceiling fan separate from lighting using a Z-Wave certified controller – 3 speed control
- For use in single pole or 3-way wiring (3-way system requires GE model #12723 add-on switch)
- LED indicator shows switch location in a dark room (can be disabled)
- UL Listed

In-Wall Dimmers & Switches



Model 14291

In-Wall Smart Switch

- Controls the on/off settings of permanently installed lighting using a Z-Wave certified controller
- For use in single pole or 3-way wiring (3-way system requires GE model #12723 add-on switch)
- LED indicator shows switch location in a dark room (can be disabled)
- UL Listed

Model 12723

In-Wall Add-On Switch

- Required for use with 3-way or 4-way wiring
- Can be installed with GE brand In-Wall Smart dimmers, switches and fan controls – add-on switch functions the same as the primary control
- UL Listed





In-Wall Dimmers & Switches



Model 14294

In-Wall Smart Dimmer

- Controls the on/off & brightness settings of permanently installed lighting using a Z-Wave certified controller
- For use in single pole or 3-way wiring (3-way system requires GE model #12723 add-on switch)
- LED indicator shows switch location in a dark room (can be disabled)
- UL listed for use with dimmable LED/CFLs



Model 14299 CA

In-Wall 1000 Watt Smart Dimmer

- Controls the on/off & brightness settings of permanently installed High Output Incandescent lighting using a Z-Wave certified controller
- For use in single pole or 3-way wiring (3-way system requires GE model #12723 add-on switch)
- LED indicator shows switch location in a dark room (can be disabled)
- No neutral wire required
- UL Listed



Model 14287 CA

In-Wall Smart Fan Control

- Controls a ceiling fan separate from lighting using a Z-Wave certified controller – 3 speed control
- For use in single pole or 3-way wiring (3-way system requires GE model #12723 add-on switch)
- LED indicator shows switch location in a dark room (can be disabled)
- UL Listed

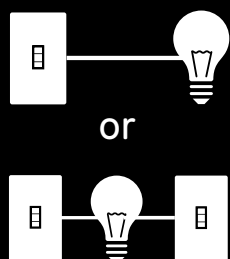


In-Wall

Dimmer & Switches



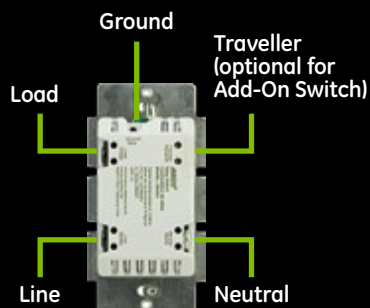
Z-Wave and Z-Wave Plus
all In-Wall Smart Devices feature...



or

Single or Multi Switch

Control lighting from up to five different switches.



Easy to install!

Replace your existing switch in as little as 15 minutes.

Includes space-saving screw terminals and neutral jumper wire.



Customize Scenes



Control From Anywhere



Schedule Timed Events



All Z-Wave and Z-Wave Plus Smart Devices are cUL Listed



In-Wall

Dimmers & Switches



Model 12727 (White)
Model 12731 CA (Light Almond)

In-Wall Smart Switch, Toggle

- Controls the on/off settings of permanently installed lighting and ceiling fans (on/off only) using a Z-Wave certified controller
- For use in single pole or 3-way wiring — 3-way system requires GE model #12728 (white) or #12732 (light almond) add-on switch
- Spring-loaded auto centering switch
- UL Listed



Model 12729 (White)
Model 12733 CA (Light Almond)

In-Wall Smart Dimmer, Toggle

- Controls the on/off setting and brightness level of permanently installed lighting using a Z-Wave certified controller
- For use in single pole or 3-way wiring — 3-way system requires GE model #12728 (white) or #12732 (light almond) add-on switch
- Spring-loaded auto centering switch
- UL listed for use with dimmable LED/CFLs



Model 12734 CA (White)
Model 12735 CA (Light Almond)

In-Wall Smart Dimmer, No-Neutral Toggle

- Controls the on/off setting and brightness level of permanently installed incandescent lighting using a Z-Wave certified controller
- For use in single pole or 3-way wiring — 3-way system requires GE model #12728 (white) or #12732 (light almond) add-on switch
- Spring-loaded auto centering switch
- No neutral wire required
- UL listed



Model 12728 (White)
Model 12732 CA (Light Almond)

In-Wall Add-On Switch, Toggle

- Required for use in 3-way or 4-way wiring
- Can be installed with In-Wall Smart dimmers, switches and fan controls – add-on switch functions the same as the primary control
- UL Listed

In-Wall Dimmers & Switches



Model 14292 CA (White)
Model 14293 CA (Light Almond)

In-Wall Smart Switch, Toggle

- Controls the on/off settings of permanently installed lighting and ceiling fans (on/off only) using a Z-Wave certified controller
- For use in single pole or 3-way wiring — 3-way system requires GE model #12728 (white) or #12732 (light almond) add-on switch
- Spring-loaded auto centering switch
- UL Listed



Model 14295 CA (White)
Model 14296 CA (Light Almond)

In-Wall Smart Dimmer, Toggle

- Controls the on/off settings and brightness level of permanently installed lighting using a Z-Wave certified controller
- For use in single pole or 3-way wiring — 3-way system requires GE model #12728 (white) or #12732 (light almond) add-on switch
- Spring-loaded auto centering switch
- UL listed for use with dimmable LED/CFLs



Model 12728 (White)
Model 12732 CA (Light Almond)

In-Wall Add-On Switch, Toggle

- Required for use in 3-way or 4-way wiring
- Can be installed with In-Wall Smart dimmers, switches and fan controls – add-on switch functions the same as the primary control
- UL Listed

In-Wall Smart Outlet



Z-Wave and Z-Wave Plus
In-Wall Smart Devices all feature...

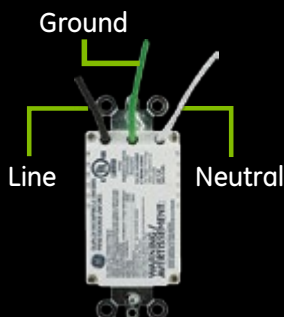


Grounded
always-on outlet

Grounded wirelessly
controlled outlet

Two Outlets

Contains one grounded Z-Wave
AC outlet and one standard grounded
AC outlet.



Easy to install!

Replace your existing outlet in as little
as 15 minutes.



Customize
Scenes



Control From
Anywhere



Schedule
Timed Events



All Z-Wave and Z-Wave Plus Smart Devices are cUL Listed

In-Wall Smart Outlet



Model 12721

Smart Outlet

- Controls the on/off settings of a light or small appliance using a Z-Wave certified controller
- Outlet contains one Z-Wave controlled plug and one always-on plug
- UL Listed

In-Wall Smart Outlet



Model 14286

Smart Outlet

- Controls the on/off settings of a light or small appliance using a Z-Wave certified controller
- Outlet contains one Z-Wave controlled plug and one always-on plug
- UL Listed



Outdoor Smart Switches



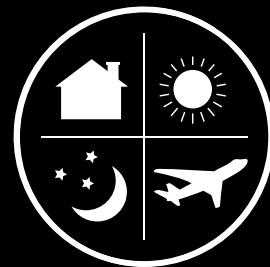
Z-Wave and Z-Wave Plus
all Outdoor Smart Devices feature...



Control From
Anywhere



Schedule
Timed Events



Customize
Scenes



All Z-Wave and Z-Wave Plus Smart Devices are cUL Listed

Outdoor Smart Switches



Model 12720

Plug-In Outdoor Smart Switch

- Controls the on/off settings of an outside light using a Z-Wave certified controller
- Also works with small pumps for outdoor water features
- Weather resistant housing with outlet cover
- Ideal for use with outdoor and seasonal lighting
- UL Listed



Model 12726 CA

Direct Wire Outdoor Smart Switch with Energy Monitoring

- Controls the on/off settings of landscape lighting, fans, pool pumps, pool heaters, HVAC systems, water heaters & more using a Z-Wave certified controller
- 40 Amp load capacity
- Lockable, weather/tamper resistant metal case keeps out rain, dirt & debris
- Energy monitoring capability allows remote monitoring of watts and kilowatt hours with compatible Z-Wave systems
- Manual override switch allows operation without requiring Z-Wave controller
- UL Listed

Outdoor Smart Switches



Model 14284 CA

Plug-In Outdoor Smart Switch

- Controls the on/off settings of an outside light using a Z-Wave certified controller
- Also works with small pumps for outdoor water features
- Weather resistant housing with outlet cover
- Ideal for use with outdoor and seasonal lighting
- UL Listed



ENGAGING PACKAGING

Packaging Features

The multi-reflective surface helps underscore the premium quality of the brand while unifying the product line for eye catching positioning at the store level.

Black and green packaging targets consumers with clear and concise messaging directly on the product.



Hang-tag or on-shelf design



At-a-glance bulb compatibility

Indoor and outdoor settings icons

Installation method



Compatibility statement

Compatible gateway icons

Easy-to-scan QR code with featured video



At-a-glance green color indicates Z-Wave products



Jasco provides vibrant and consumer friendly packaging for GE Z-Wave products.



Connected Home brochure
in every package



Easy to
open box



Features & benefits
overview on back
of package

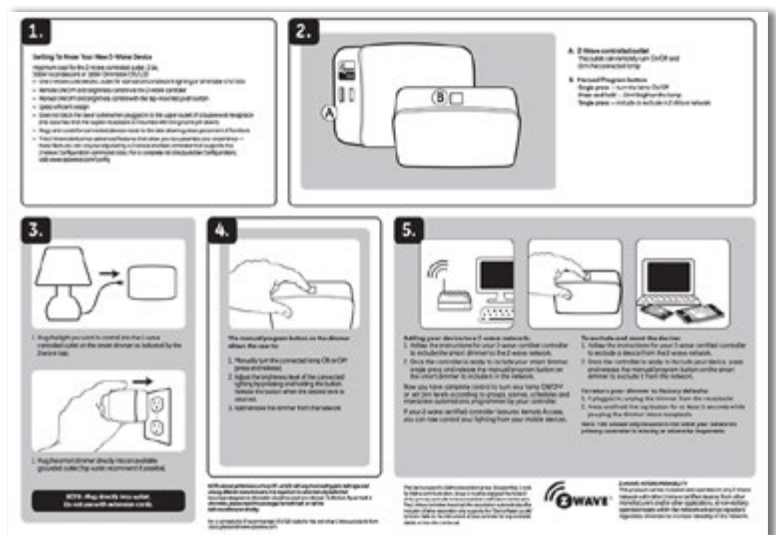


Customer friendly
quick-start guide
with easy-to-read
large print

Installation Made Easy

The quick-start guide included with every Z-Wave product features easy-to-read large print, step-by-step instructions and product installation illustrations. Consumers will be controlling and scheduling lights, pool pumps, water heaters and more from anywhere using their phone*, tablet*, PC* or Z-Wave remotes in no time!

*Requires Z-Wave Certified gateway/hub





Z-Wave and

Engage, enhance, and connect with





Z-Wave Plus

Jasco's Connected Home Collection.



For more than 100 years, GE has used its global presence and applied new technologies to create and better the consumer products on which we depend.

As an exclusive GE licensee, Jasco Products Company develops, markets and distributes more than 2,000 GE-branded consumer electronic accessories, computer accessories, home electric products and home security/surveillance products. Jasco provides the brand people trust.

The bold, vibrant graphics and easy-to-understand messages on the Jasco/GE packaging enhance the appearance and value of the products at the retail level.

Merchandising Jasco/GE products will increase sell through, provide increased margin opportunity, and inspire confidence and brand loyalty with your customers.

Jasco works hard to meet the needs of a culturally diverse marketplace; all Jasco/GE packaging features information and instructions in both English and Spanish.

JASCO

LEADER • INNOVATOR • TRUSTED PARTNER

10 E. MEMORIAL RD., OKLAHOMA CITY, OK 73114 | T 405.752.0710 | F 405.752.1251 | WWW.BYJASCO.COM

The GE logo is a registered trademark of General Electric Company and is used under license by Jasco Products Company, LLC.

All brand names and products listed/shown are registered trademarks of their respective owners.

Not liable for typographical or pictorial errors.

©2015 JASCO | LH170 — Dec/15



Licensed
Products